

SpaceJoist Design Information Request

CLIENT GUIDE

The purpose of this Document is to identify to the Building Designer the Critical Information required to complete a SpaceJoist Floor Design.



Table of Contents

Floor Features and Recommended Drawings.....2

Recommended Section Drawings.....3

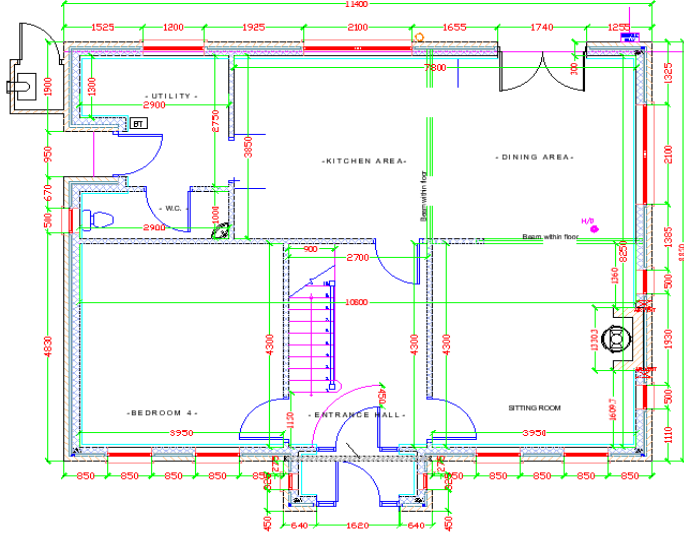
Support Details.....4

Aperture Details.....5

Building Designer Responsibility6

Floor Features and Recommended Drawings

Ground Floor



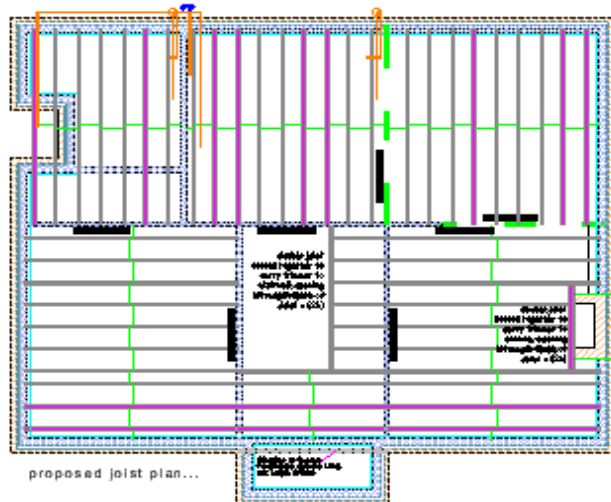
Dimensioned Floor Plans

SpaceJoists are designed to suit exact setting out.

As such, floor plans must be provided with all dimensions for both external and internal walls.

Any discrepancies during construction may mean that the SpaceJoists will not fit and may require re-designing.

Load bearing walls must be highlighted on plans.



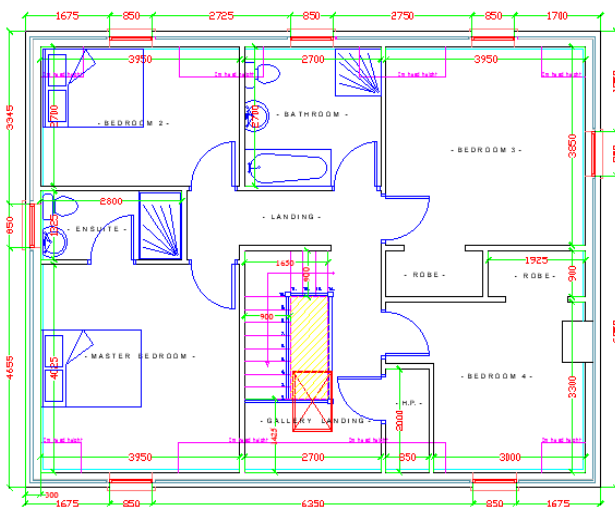
It is important to remember that any connection of the floor structure to the building must be reviewed and confirmed by the building designer.

SpaceJoist Span

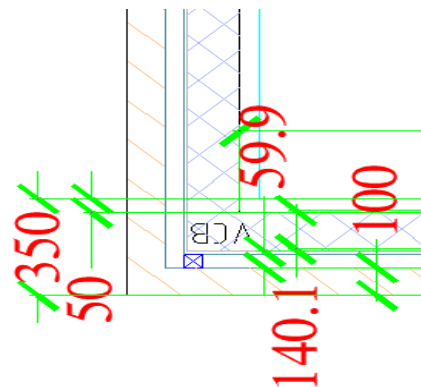
The designer must be told if the project engineer requires joists to span in a certain direction. Also, if joists are required to be at predetermined centers.

The provision of a proposed joist layout helps the designer to fulfill these requirements.

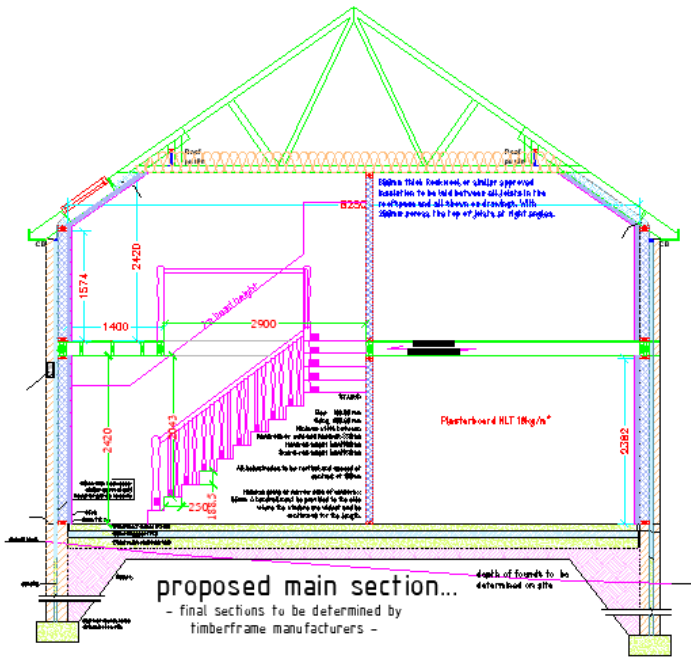
Accurate dimensions of walls will ensure the designer can produce SpaceJoists with correct spans.



First Floor

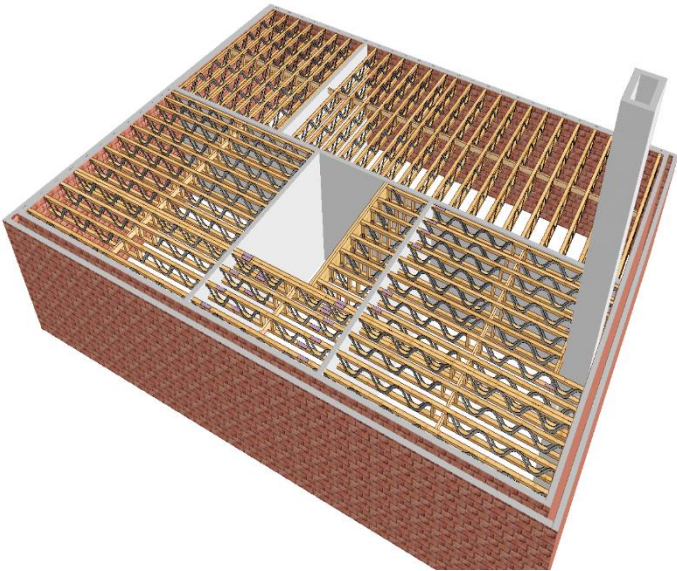
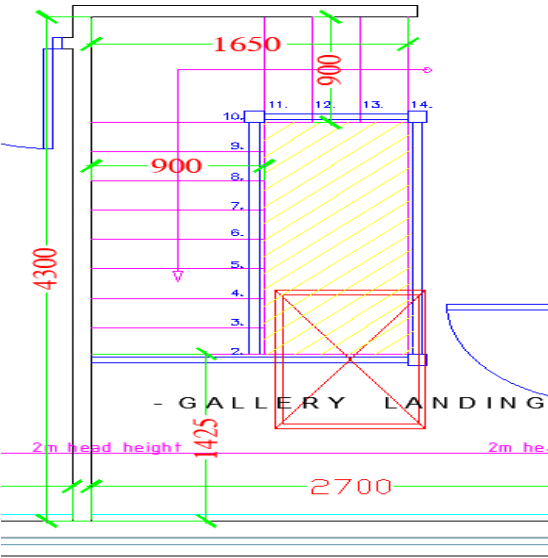


Recommended Section Drawings



Sections showing dimensions for stairs is recommended as this provides the designer with accurate information to allow for stair opening.

Accurate dimensions will ensure the correct open is allowed for Stairs .



Support Details.

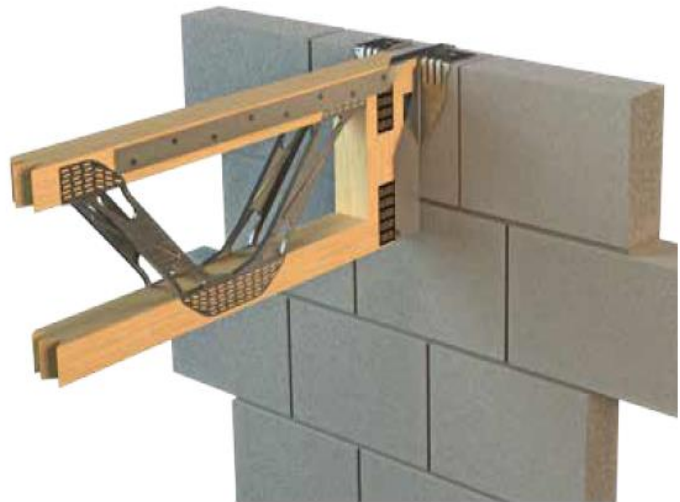
Details should be provided as to how the SpaceJoists are intended to be supported. Details shown below are the most common- for more details and information please see the SpaceJoist technical guide- available to download at www.itwcp-offsite.co.uk

Masonry

SD1- Build-in to Masonry
Masonry

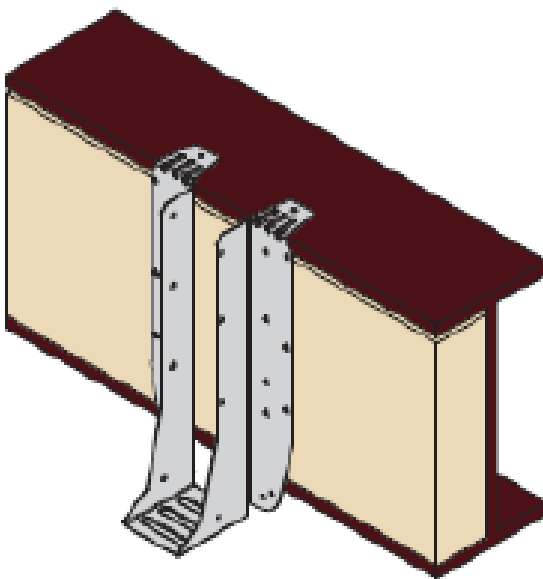


SD2-Hanger Support onto

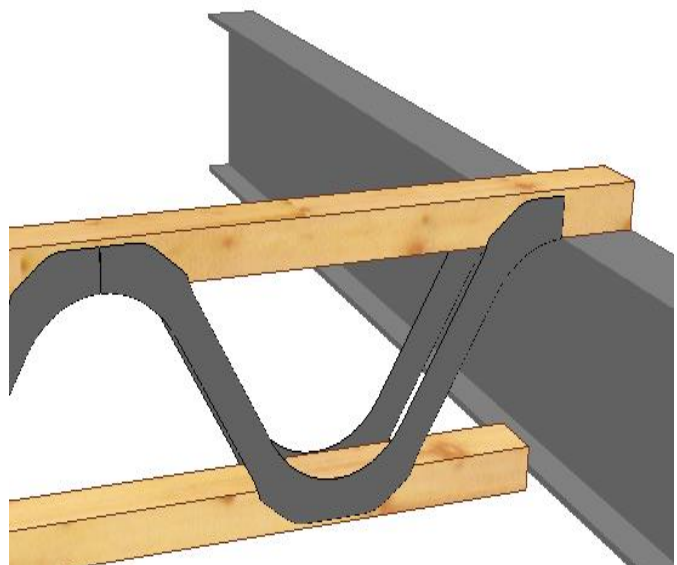


Steel Beam

Beam Filled with Timber and SpaceJoist supported by Hanger.



Top Chord Supported SpaceJoist on Steel Beam.



Aperture Details

It is important for a designer to be aware of the max size of ducts that are in the SpaceJoist zone.

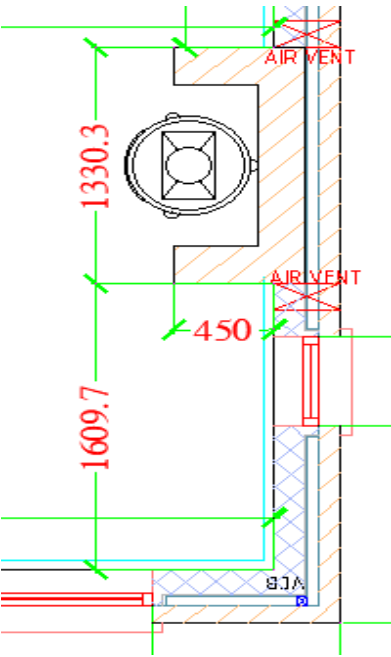


Web	Depth	Circular	Rectangular		Square	Max height
TW8	195	120	73	208	107	125
SJ9	219	120	75	210	105	125
SJ10	254	154	97	208	133	158
SJ12	304	192	121	215	155	209
TW14	375	252	160	283	204	285
TW16	425	265	178	264	212	330

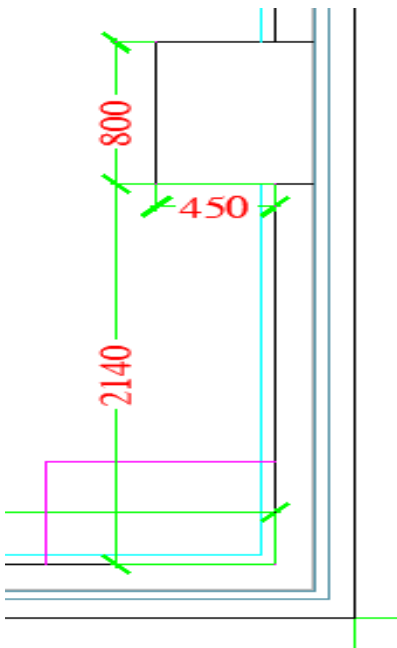
Dimensions shown in mm.

These dimensions include a 3mm clearance.
Dimensions are approximate as discrepancies may occur in manufacture.

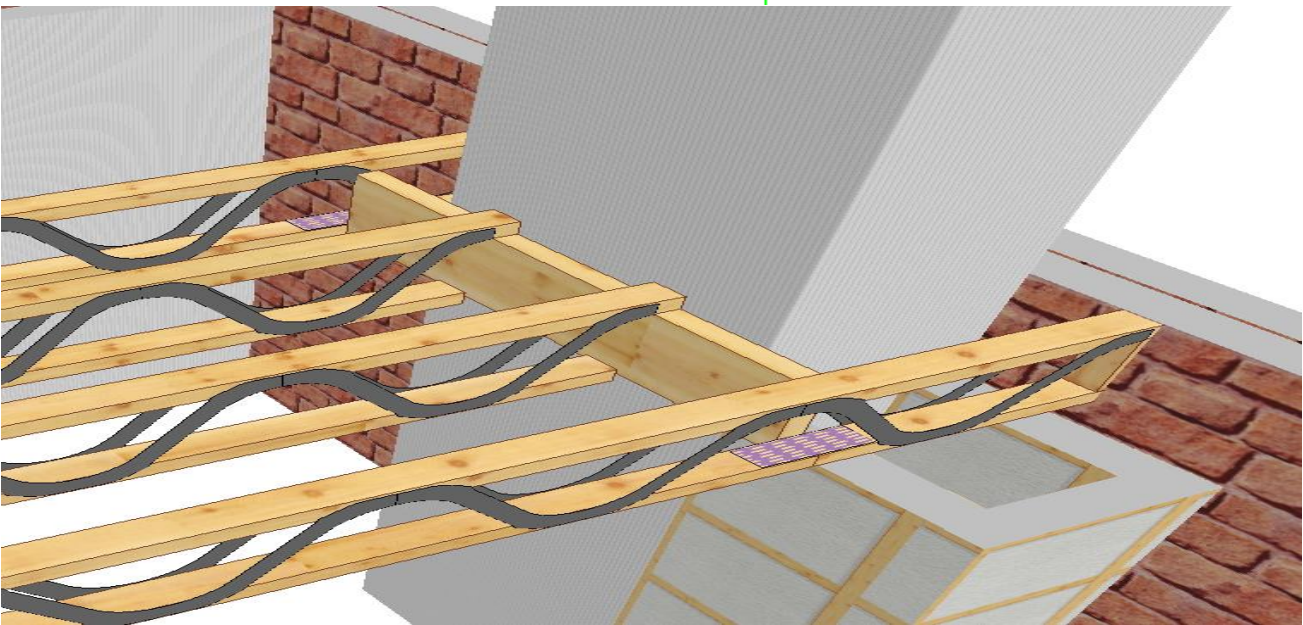
ground Floor Chimney



First Floor Chimney



Chimney dimensioning is **very important** as we can see from the sections that the chimney can reduce in size as it progresses from ground floor to first floor. This enables the correct opening and spacing of SpaceJoists and improves floor designs.



Building Designer Responsibility

Building restraint & bracing

The floor designer takes responsibility for the bracing of the floor structure, however, the bracing of the building and therefore the connection of the floor bracing to the structure is the responsibility of the building designer.

Loadings

It is the building designer's responsibility to inform the floor designer of all the loads being applied to the floor structure. The building designer should review the design to ensure the SpaceJoist designer has accounted for all necessary loadings.

Connection of timber structure to building

Specifications of connections of the floor structure to the building are the responsibility of the building designer, these must be reviewed during approval to ensure they meet requirements. Building designers should particularly ensure that actions of wind onto a building have been taken into consideration.



CONSTRUCTION PRODUCTS

Gang-Nail Technical Support

3rd Floor Westmead House
Farnborough
Hampshire
GU14 7LP
United Kingdom

t : +44(0)1252 551960
f : +44(0)1252 543436

Customer Services (GB manufacturers)

1 Wheatstone Place
Southfield Industrial Estate
Glenrothes Fife
KY6 2SW
United Kingdom

t : +44(0)1592 771132
f : +44(0)1592 771182
e : orders@itwcp.com

Alpine Technical Support

1st Floor, Unit 1a Penrose House
Treleigh Industrial Estate
Redruth
Cornwall
TR16 4AX
United Kingdom

t : +44(0)1872 245456
f : +44(0)1872 245451
e : helpdesk@itwcp.com

© ITW Construction Products

No part of this publication may be reproduced
without prior permission from ITW CP.

A division of ITW Limited

Registered in England No. 059693

www.itwcp.com

